

Siku Quanshu (Wenyuange Edition) Online Subscription Services Client Program Installation Guide

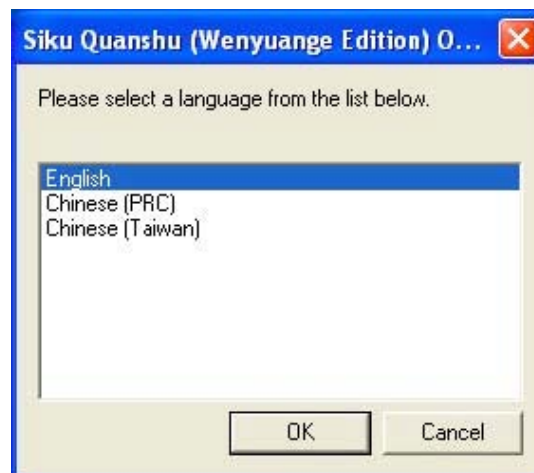
System Requirements

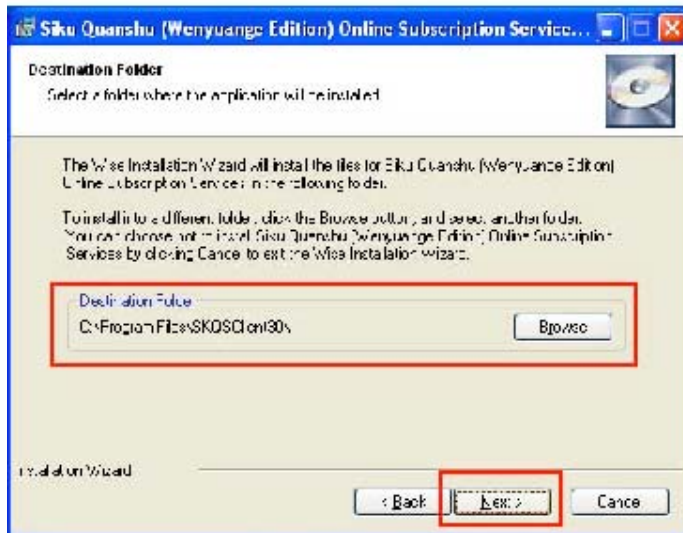
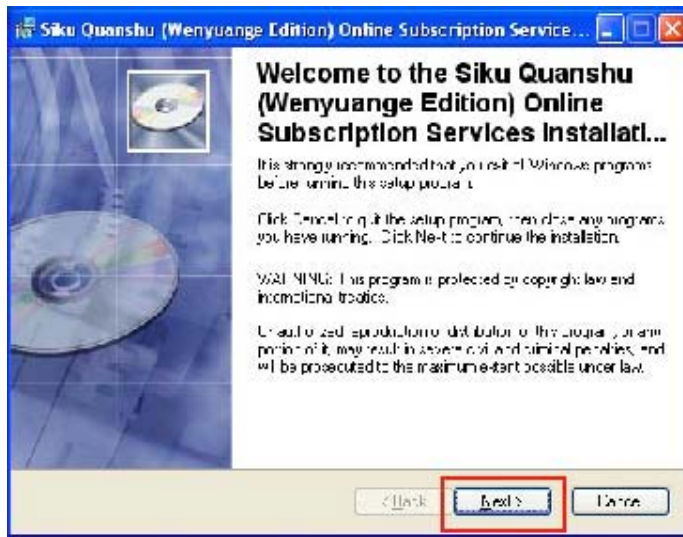
The minimum requirements of the Siku Quanshu (Wenyuange Edition) Online Subscription Services are:

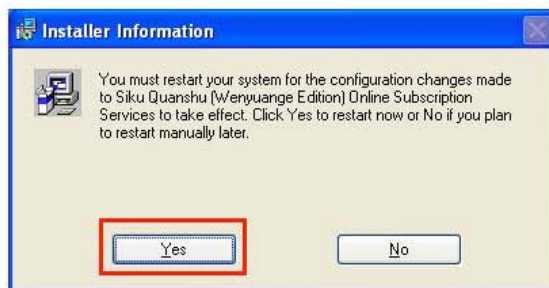
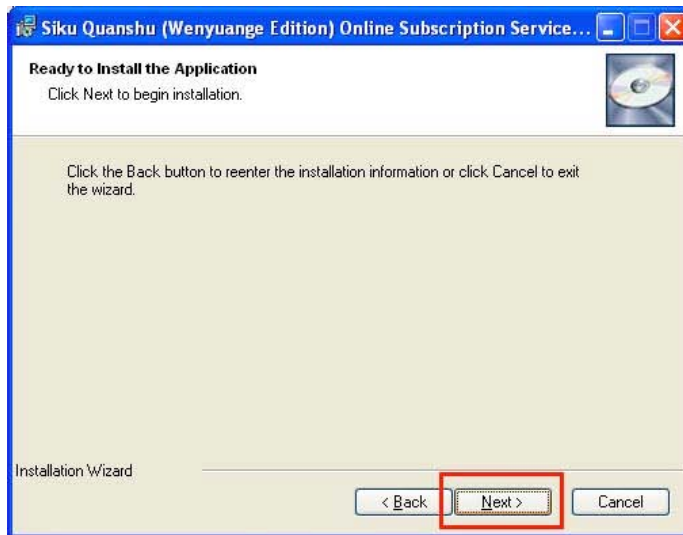
- (1) Pentium III 800 or above CPU
- (2) 256MB RAM
- (3) 140 MB Hard Drive space (for client program and font installation)
- (4) 1024 x 768 Resolution with 32768(15bit) or above color display
- (5) Microsoft Windows XP (Traditional Chinese, Simplified Chinese, English, Japanese or Korean version) (already updated to Service Pack 2)
- (6) East Asian Language Support installed (*Please refer to 5.Technical Support)
- (7) Microsoft Internet Explorer 6.0
- (8) Microsoft Windows Installer 3.1 and Microsoft .NET Framework 2.0
- (9) Your computer must have access to the Internet.

Installing the Program

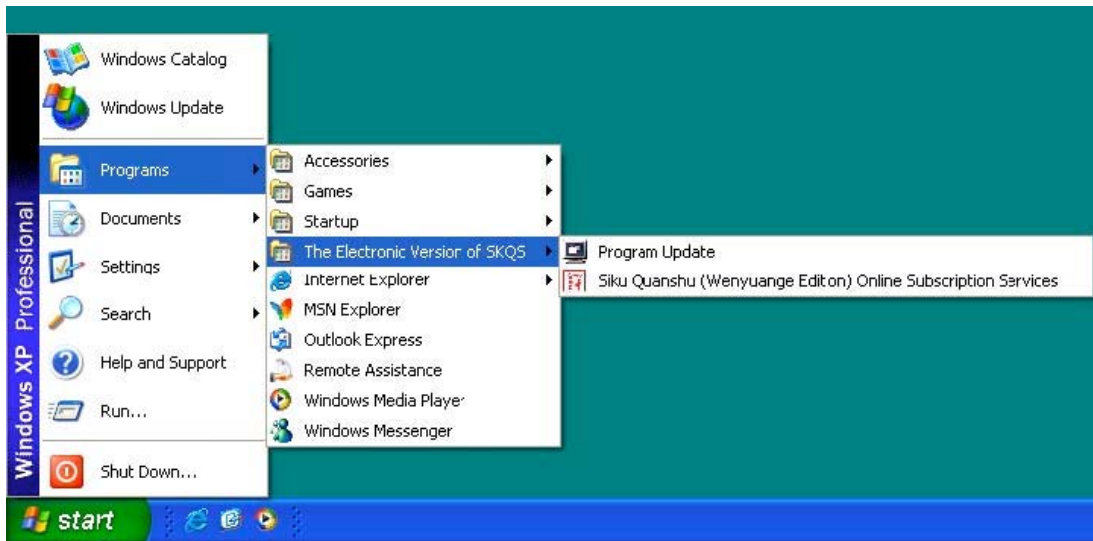
1. Download the [setup](#) file. The setup file is named, SkqsClient30.exe. After downloading the setup file, click on the setup file to begin installation. The following window will open. Follow the installation instructions on the window.







2. After you have restarted your computer, select “Start” 練“Programs” 練“The Electronic Version of SKQS” 練“Siku Quanshu (Wenyuange Edition) Online Subscription Services” to launch the program.



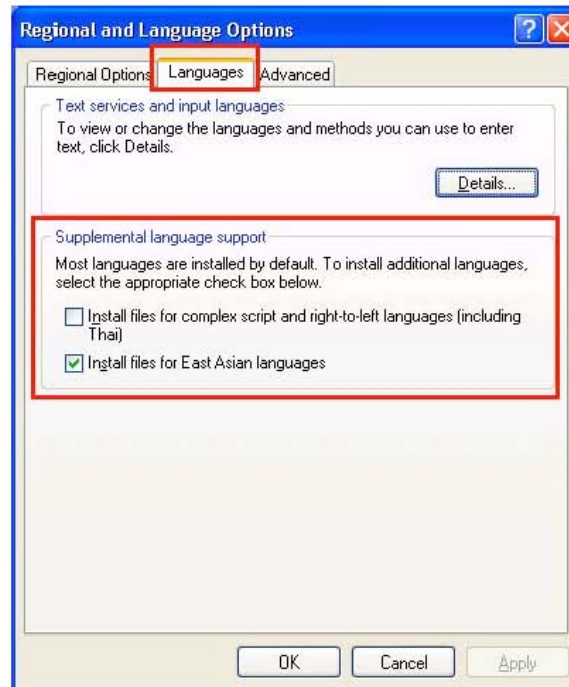
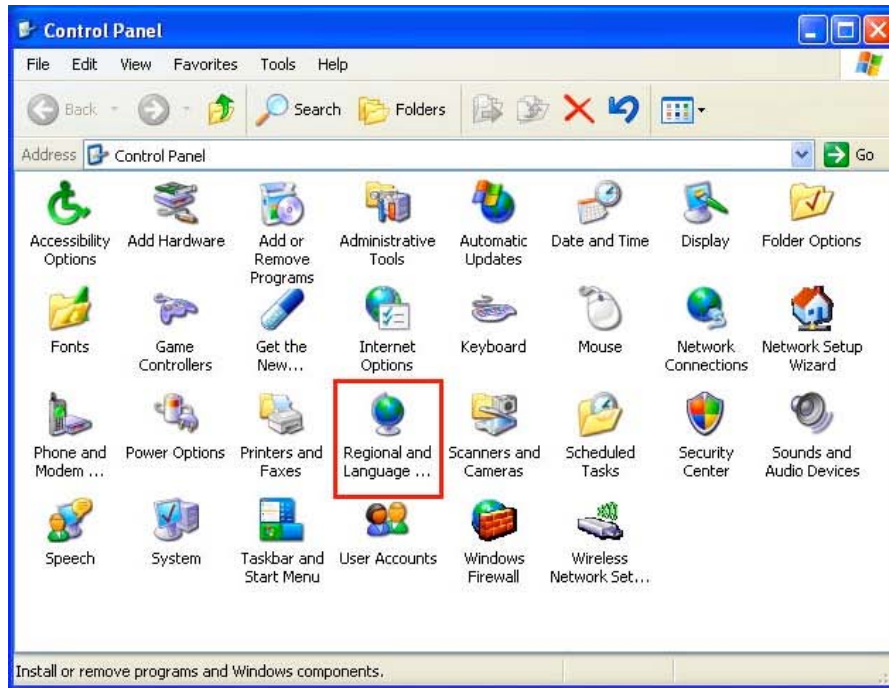
3. For on-campus access, click the **IP Login** button.
4. For off-campus access, fill in the username and password fields – **you must use a specific username/password provided by the Libraries, not your ND netid/password combination.** The username/password is available from the Siku Quanshu ND access page.



1.

Installing East Asian Language Support under Windows XP.

1. Select "Start" 練 "Settings" 練 "Control Panel".
2. In the "Control Panel" window, double-click the "Regional and Language Options" icon.
3. In the "Regional and Language Options" window, choose "Languages".
4. Below the "Supplemental language support", check the option "Install files for East Asian languages". Click "OK" and you will be asked to insert the Windows CD-ROM or point to a network location where the files are located.
5. After the files are installed, you must restart your computer.



To Uninstall Siku Quanshu:

1. Select "Start" 練"Settings" 練"Control Panel".
2. In the "Control Panel" window, double-click the "Add or Remove Programs" icon.
3. In the "Add or Remove Programs" window, select the item "Siku Quanshu (Wenyuange Edition) OnlineSubscription Services" and click "Remove".
4. Click "Yes" to start the uninstallation process.
5. Finally, click "Yes" to restart the computer.